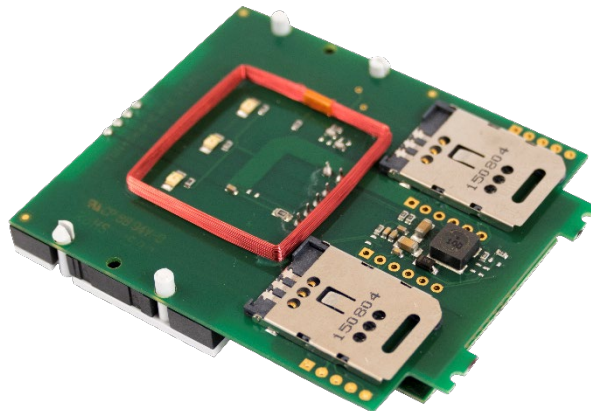


TWN4 MultiTech SmartCard LEGIC M

Multi-frequency RFID module (LF/HF/NFC) for
ISO/IEC 7816 cards



TWN4 MultiTech SmartCard LEGIC M
(exemplary illustration)

ELATEC TWN4 MultiTech SmartCard LEGIC M is a combination of the TWN4 MultiTech LEGIC M (RFID) and an integrated contact card reader/writer (ISO 7816). It allows users to read and write to almost any 125 kHz and 13.56 MHz tags and/or labels. It supports all major technologies from various suppliers like ATMEL, EM, ST, NXP, TI, HID, LEGIC, etc. and many ISO standards like ISO 14443A/B (T=CL), ISO 15693 and ISO 18092 / ECMA-340 (NFC). The integrated chip card reader has been designed for easy integration into various applications.

The device can be programmed with a script language for autonomous execution of even complex commands like login procedures, increment/decrement functions and many more. It supports host communication via USB or RS-232.

Special features:

- + Powerful SDK for writing apps which are executed directly on the module
- + Firmware update in the field possible
- + On-board 18 kB flash storage, e.g. for storing user accessible non-volatile data
- + Supports transparent data exchange with RFID media
- + CCID and PC/SC 2.01



Elevator



EV Chargers



Access



Shop POS



Fitness
Equipment



Ticket POS



PC Log-on



Document
Management



Driver ID



Vending



Parking



Gaming



Locker Locks



Time
Attendance



Industrial
PC

TECHNICAL DATA

FREQUENCIES	125 kHz (LF) / 13.56 MHz (HF)	
ANTENNAS	Integrated	
DIMENSIONS (L X W X H)	Approx. 76.00 x 62.00 x 11.00 mm / 2.99 x 2.44 x 0.43 inch	
POWER	USB: 4.3 V – 5.5 V	
	RS-232: requires 5 V external power supply	
	PS2 classified power source according to IEC 62368-1, short-circuit current < 8 A	
TEMPERATURE RANGE	Operating: -25 °C up to +80 °C (-13 °F up to +176 °F)	
	Storage: -40 °C up to +85 °C (-40 °F up to +185 °F)	
RELATIVE HUMIDITY	5% to 95% non-condensing	
READ/WRITE DISTANCE	LF and HF: up to 100 mm / 4 inch, depending on environment and transponder	
OPERATING MODES (USB)	USB keyboard emulation – USB virtual COM port – CCID / PC/SC 2.01	
MTBF	500,000 hours / Min. 100,000 card insertion cycles	
WEIGHT	Approx. 35 g / 1.23 oz	
SMARTCARD STANDARDS	ISO/IEC 7816 Part 1-4, Class A/B/C (5V, 3V, 1.8V), T=0, T=1	
SMARTCARD CLOCK FREQUENCY	5 MHz up to 15 MHz	
SUPPORTED SMARTCARDS	5V, 3V and 1.8V, ISO/IEC 7816 Class A/B/C	
POWER TO SMARTCARD	60 mA in Class A; 55 mA in Class B; 35 mA in Class C	
SMARTCARD DETECTION	Card present switch / Automatic power on/off / Short-circuit protection	
SMARTCARD CARD SIZE	2x ID-000 (SAM) ID-1	
SMARTCARD CONTACT TYPE	8-pin sliding contact socket, C4/C8 support ID-1	
SUPPORTED OPTIONS AND TRANSPONDERS	Depending on the firmware version and installed options, ELATEC readers and modules can support a wide range of RFID technologies. Please refer to the relevant ELATEC transponder matrix (available at www.elatec-rfid.com/int/transponder-technology) for more information about the available options and RFID technologies supported by the product.	
OS SUPPORT	Windows 7 (32-/64-bit) and higher versions, Linux, Android ¹⁾ , iOS ¹⁾ , MAC OS X ¹⁾	
PERIPHERAL INTERFACES	USB, RS-232, 2 SAM sockets, TTL serial (logic level 3.3 V, CMOS, 5 V tolerant), I ² C, 2 GPIOs, Clock/Data, Wiegand D0/D1	
TRANSMISSION SPEED	Host: USB full speed (12 Mbit/s), RS-232: up to 115,200 baud, HF Air: up to 848 kbit/s	
CERTIFICATION NAME	TWN4 MultiTech SmartCard LEGIC M	
CERTIFICATIONS	Non-exhaustive list ²⁾ :	
	CE/RED, REACH and RoHS-III compliant	
ORDER CODES	T4SO-B	Standard reader module
	T4SO-B-P	Reader module with P option

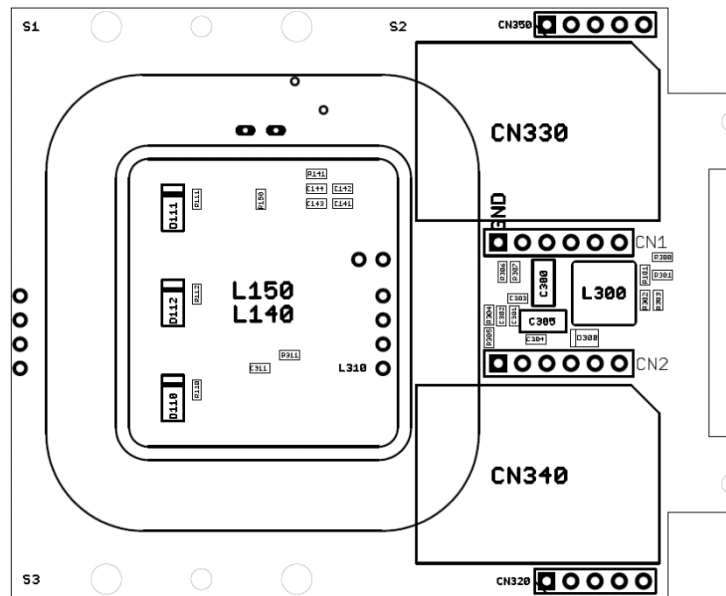
¹⁾On request

²⁾The product has been certified for use in many countries and regions. Contact your Sales representative for detailed information about all certifications and approvals granted to the product.

ACCESSORIES

HOLDERS	HOSW-B	TWN4 SmartCard housing HIP2, without inlay
	HOSW-BE2	TWN4 SmartCard housing HIP2, with inlay
CABLES AND POWER SUPPLIES	ELATEC RFID readers and modules can be delivered with additional cables or external power supplies. Refer to the data sheet <i>Cables for ELATEC devices</i> for detailed information.	

TECHNICAL DRAWINGS



All measures in mm [inch]

ELATEC GmbH

Zeppelinstr. 1
82178 Puchheim
Germany
P +49 89 552 9961 0
F +49 89 552 9961 129
E-Mail: info-rfid@elatec.com
Website: elatec.com

ELATEC Systems GmbH

Schwieberdinger Str. 44
71636 Ludwigsburg
Germany
P +49 7141 309736 0
E-Mail: info-rfid@elatec.com
Website: elatec.com

ELATEC Inc.

1995 SW Martin Hwy
Palm City • FL 34990
USA
P +1 772 210 2263
F +1 772 382 3749
E-Mail: americas-info@elatec.com
Website: elatec.com

ELATEC Technology (Shenzhen) LLC

918, Main Building, Tian An Cyber Times
Tower, No. 6, Tairan Fourth Road, Tian 'an
Community, Shatou Neighborhood
Futian District • Shenzhen • China
P/F +86 755 2394 6014
E-Mail: apac-info@elatec.com
Website: elatec.com

ELATEC reserves the right to change any information or data in this document without prior notice. ELATEC declines all responsibility for the use of this product with any other specification but the one mentioned above. Any additional requirement for a specific customer application has to be validated by the customer himself at his own responsibility. Where application information is given, it is only advisory and does not form part of the specification. Disclaimer: All names used in this document are registered trademarks of their respective owners.